

Decompressed Compression Top				Product Spec Coversheet	
<b>Style #:</b>	2110	<b>Last Updated:</b>	3-May-18		
<b>Style Name:</b>	Compressed	<b>Date Created:</b>	3-Apr-18		
<b>Description:</b>	Women's Fitted Compression Top	<b>Developer:</b>	Rylie Bryant		
<b>Category:</b>	Women's	<b>PLM:</b>	Dr. Morris		
<b>Size Range:</b>	XS-XL	<b>Fit Block:</b>	Women's Compression Top		
<b>Season:</b>	Autumn/Winter	<b>Status:</b>	New		
<b>Year:</b>	2018				
<b>Vendor:</b>	TBD				
<b>Country of Origin:</b>	Bangladesh				
<b>Status of Garment</b>					
	<b>Author</b>	<b>Proto Number</b>	<b>Date Evaluated</b>	<b>Status</b>	<b>Instructions to Vendor</b>
Approval 1st Proto					
Approval 2nd Proto					
Approval 3 (if needed)					
Salesman Sample					
Jump Sizes					
Size Run					
Pre-Production					
TOP Samples					
<b>Status of Trims</b>					
	<b>Author</b>	<b>Trim Number</b>	<b>Date Evaluated</b>	<b>Status</b>	<b>Instructions to Vendor</b>
<b>How to Proceed</b>					
1					
2					
3					

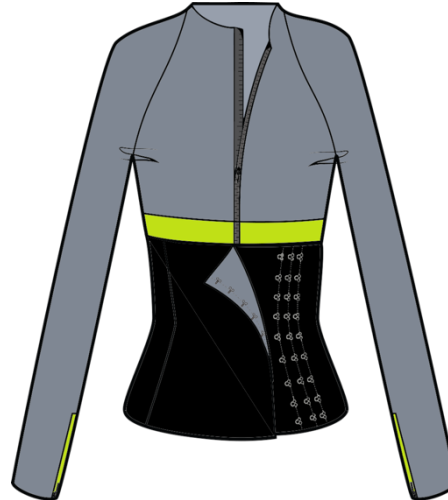
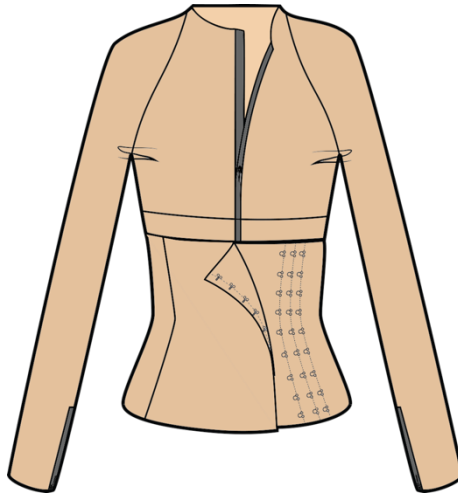
# Decompressed Compression Top

Kristen Morris

## Colorways

Date Created  
3-Apr-18

Style #:	2110	Color Layout	A	B	C	D	E	F
Style Name:	Compressed	Colorway Name	Upper Bodice Front, Upper Bodice Back, Sleeves	Waistband	Lower Bodice Front Lower Bodice Back	Lower Bodice Lining	Topstitching	Sleeve Zipper Tape
Description:	Women's Fitted Compression Top							
Category:	Women's							
Size Range:	XS-XL	Olive	Olive	Black	Gray	Olive	DTM	Black
Season:	Autumn/Winter	Tan	Tan	Tan	Tan	Tan	DTM	Tan
Year:	2018	Steel	Steel	Chartreuse	Black	Steel	DTM	Chartreuse
Vendor:	TBD							
Country of Origin:	Bangladesh							



Revision Date	Revisions

# Decompressed Compression

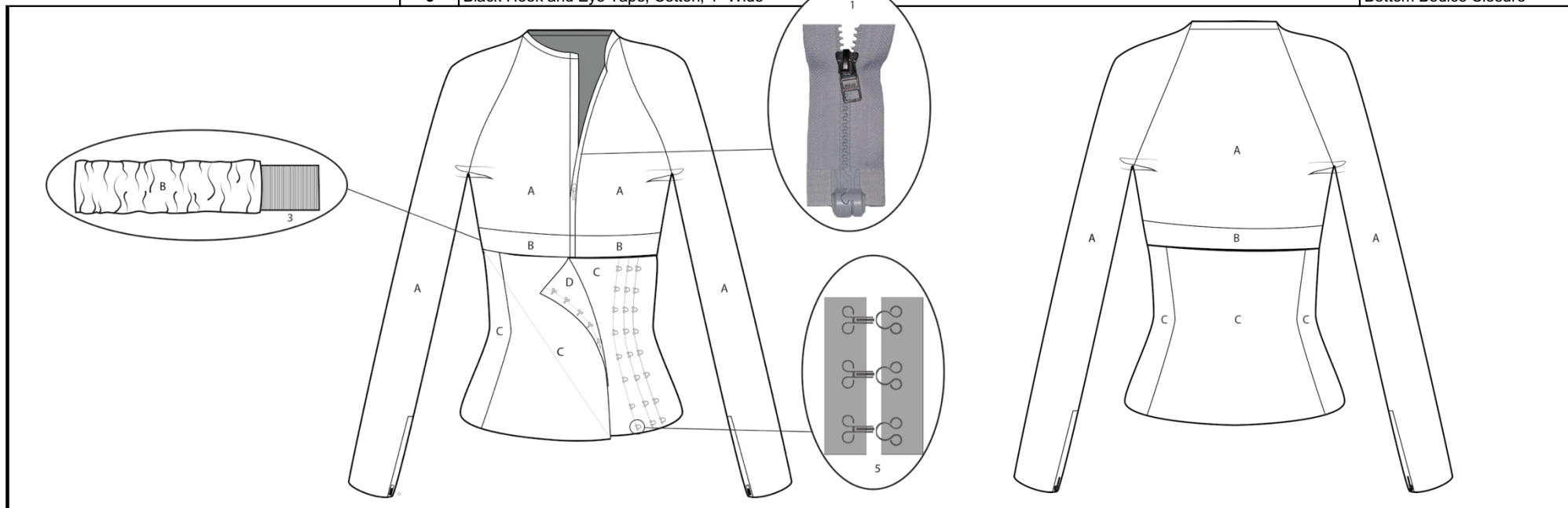
Kristen Morris

## Style Specs

Date Created

24-Jan-17

Style #:	2110	Fabric Code	Fabric Details	Use/location
Style Name:	Compressed	A	Gray PurThread, 76% Cotton, 14% Spandex, 10% PurThread, 62", 205 GSM	Upper Bodice, Sleeves
Description:	Women's Fitted Compression	B	Lime Cotton Knit Pique, 100% Cotton, 72", 211 GSM, PurThread Finish	Waistband
Category:	Women's	C	Black Stretch Cotton Sateen, Lycra/Cotton Blend, 50", 222 GSM, PurThread Finish	Bottom Bodice
Size Range:	XS-XL	D	Gray PurThread, 76% Cotton, 14% Spandex, 10% PurThread, 62", 205 GSM, PurThread Finish	Bottom Bodice Lining
Season:	Autumn/Winter	Trims	Trim Details	Location
Year:	2018	1	DSN Magnetic Zipper, Adult, Black, 25", Gunmetal Gray Pull	Neck Opening to waist
Vendor:	TBD	2	Chartreuse Nylon Coil Separating Zipper,	Wrist opening
Country of Origin:	Bangladesh	3	White Plain Elastic Trimming, 2.5"	Waistband
		4	Bemis Seam Tape, Clear, 31 g/m, Silicone Coated Paper, 1524 mm Wide	All Seams
		5	Black Hook and Eye Tape, Cotton, 1" Wide	Bottom Bodice Closure



# Decompressed Compression Top

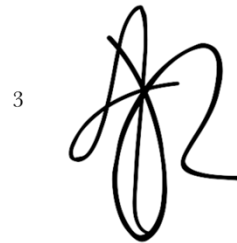
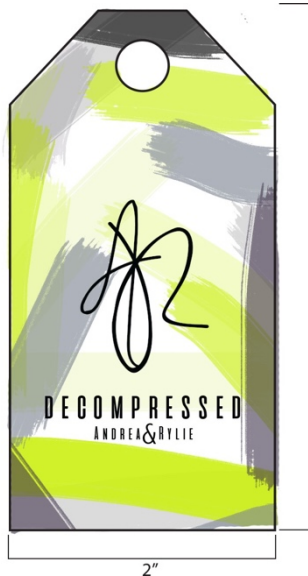
# Style Specs - Hangtags/Labels

Kristen Morris

Date Created

3-Apr-18

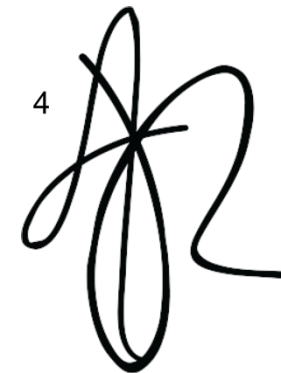
<b>Style #:</b>	2110	<b>Label Code</b>	<b>Labels/Hantags</b>	<b>Labels/Hantags Placement</b>
<b>Style Name:</b>	Compressed	1	Care Label	Heat Pressed below Size Label and brand label below CB collar seam
<b>Description:</b>	Women's Fitted Compression	2	Size Label	Heat pressed below brand label, above care label, below CB collar seam
<b>Category:</b>	Women's	3	Brand Label (inside)	CB neck on quilted lining 1.5" down from CB collar seam (as measured from center of tag)
<b>Size Range:</b>	XS-XL	4	Brand Logo (outside)	Outside wearer's left .5" up from finished bottom edge 1" from side seam
<b>Season:</b>	Autumn/Winter	5	Hangtag	On the wearers left side, inside neck seam, using 3" hang tag fastener
<b>Year:</b>	2018	<b>Shrinkage Std</b>		2% Width x 5% Length
<b>Vendor:</b>	TBD	<b>Carton Quantity</b>		Please advise
<b>Country of Origin:</b>	Bangladesh	<b>Carton Size</b>		Please advise based on quantity
			<b>Packing Method</b>	Folded; Individually Polybagged



**DECOMPRESSED**  
ANDREA & RYLIE

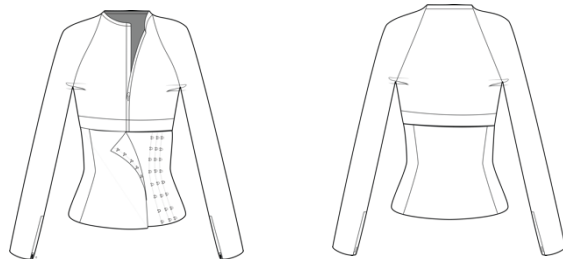
Size M

2 Made In Bangladesh  
76% Cotton, 14% Spandex, 10% PurThread,  
Cotton/Lycra Blend  
1 Cold Wash, Tumble Dry Low Heat,  
Do Not Bleach



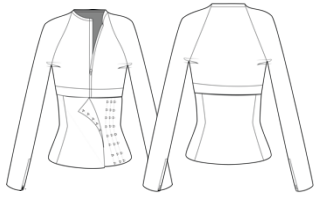
<b>Content on Label</b>	<b>Upper:</b> 76% Cotton 14% Spandex 10% PurThread <b>Lower:</b> 92% Cotton 8% Lycra	<b>Care on Label</b>	Cold Wash, Tumble Dry on Low Heat, Do Not Bleach
-------------------------	--	----------------------	--

<b>Revision Date</b>	<b>Revisions</b>

Decompressed		Bill of Material						
Style #:	2110							
Style Name:	Compressed							
Description:	Women's Fitted Compression Top							
Category:	Women's							
Size Range:	XS-XL							
Season:	Autumn/Winter							
Year:	2018							
Vendor:	TBD							
Country of Origin:	Bangladesh							
FABRICS (ROLL GOODS)				WIDTH/	MARKER	%ALLOW,	USAGE	
FABRIC CODE	DESCRIPTION	USE/LOCATION	VENDOR	SIZE	USAGE	SZ & WST	YARDS	
A	Gray PurThread Cotton Fabric	Upper Bodice, Neckband, Sleeves	Cotton Inc.	62"	1.000	8%	1.500	
B	Lime Cotton Knit Pique	Waistband	TBD	72"	0.500	8%	0.500	
C	Black Stretch Cotton Sateen	Bottom Half of Bodice	TBD	50"	0.100	8%	1.000	
D	Gray PurThread Cotton Fabric	Bottom Bodice Lining	Cotton Inc.	62"	0.10	8%	0.250	
TRIM CODE	DESCRIPTION	USE/LOCATION	VENDOR	SIZE	QTY	%ALLOW	QTY	
1	DSN Magnetic Zipper	CF Neckband to CF waist, Gunmetal	DSN Designs	25 Inches	2.00	5.00%	2.10	
2	Chartreuse Nylon Coil Separating Zipper	Wrist Sleeve Opening	YKK	14 inches	3.00	5.00%	3.15	
3	White Elastic Trimming (2.5")	Under the Bust on Bodice	PCC	1 Yard	1.00	5.00%	1.05	
5	Black Hook and Eye Tape, Cotton, 1" Wide	Bottom Bodice Closure	PCC	1 yard	1.00	5.00%	1.05	
4	Bemis Seam Tape Clear, 31 g/m, Silicone Coated Paper	Use for all seams and hems (1524 mm wide)	Bemis		1.00	5.00%	1.05	
					1.00	5.00%	1.05	
					1.00	5.00%	1.05	
HANGTAG/ LABEL CODE	DESCRIPTION	USE/LOCATION	VENDOR	SIZE	QTY	%ALLOW	QTY	
1	Care Label	Heat Pressed below Size Label and brand label below CB collar seam	HWJ Jong Label MFG.	2" X 1"	1.00	5.00%	1.05	
2	Size Label	Heat pressed below brand label, above care label, below CB collar seam	HWJ Jong Label MFG.	2" X 1"	1.00	5.00%	1.05	
3	Brand Label (inside)	CB neck on quilted lining 1.5" down from CB collar seam (as measured from center of tag)	HwJ Jong Label MFG.	2" X 2"	1.00	5.00%	1.05	
4	Brand Logo (outside)	Outside wearer's left .5" up from finished bottom edge 1" from side seam	HWJ Jong Label MFG.	2" X 2"	1.00	5.00%	1.05	
5	Hangtag	On the wearers left side, inside neck seam, using 3" hang tag fastener	CLP	2" X 4"	1.00	5.00%	1.05	
	Packaging	(carton/tissue paper)	CLP		1.00	5.00%	1.05	
	Polybag	IndividuaPolybaggedged	CLP	11" X 14"	1.00	5%%	1.05	
Revision Date								

## Decompressed Compression Top

## Graded Specs

<b>Style #:</b>	2110	<b>Spec Date</b>	3-May-18											
<b>Style Name:</b>	Compressed													
<b>Description:</b>	Women's Fitted Compression Top													
<b>Category:</b>	Women's													
<b>Size Range:</b>	XS-XL													
<b>Season:</b>	Autumn/Winter													
<b>Year:</b>	2018													
<b>Vendor:</b>	TBD													
<b>Country of Origin:</b>	Bangladesh													
<b>Code</b>	<b>Point of Measure</b>	<b>TOL. +/-</b>		<b>XS</b>	<b>S</b>	<b>M</b>	<b>L</b>	<b>XL</b>	<b>Grade</b>	<b>Grade XS</b>	<b>Grade S</b>	<b>Grade M</b>	<b>Grade L</b>	<b>Grade XL</b>
<b>Bodice/Shirt</b>														
1	Chest Width (1" below armhole) (1/2)	1/2		13	14	15	16	17		-1	-1	15	1	1
2	Front Body Length (from HPS)	3/8		22	22 3/4	23 1/2	24 1/4	25		- 3/4	- 3/4	23 1/2	3/4	3/4
3	Back Body Length (from HPS)	3/8		23 1/2	24 1/4	25	25 3/4	26 1/2		- 3/4	- 3/4	25	3/4	3/4
4	Sleeve Length (from CB to edge of cuff)	3/8		27 1/2	28	28 1/2	29	29 1/2		- 1/2	- 1/2	28 1/2	1/2	1/2
5	Armhole (straight) (1/2)	1/4		8 3/4	9 1/8	9 1/2	9 7/8	10 1/4		- 3/8	- 3/8	9 1/2	3/8	3/8
6	Sleeve Opening	1/8		3	3 1/4	3 1/2	3 3/4	4		- 1/4	- 1/4	3 1/2	1/4	1/4
7	Neckline Length (along seam)	1/4		-1	- 1/2	16 3/4	1/2	1		- 1/2	- 1/2	0	1/2	1/2
8	Waist Width (15" down from HPS) (1/2)	1/2		13	14	18	16	17		-1	-1	15	1	1
9	Sweep Width (straight at hem) (1/2)	1/2		11 1/2	12 1/2	13 1/2	14 1/2	15 1/2		-1	-1	13 1/2	1	1
10	Bottom Hem	1/8		13	14	15 3/8	16	17		0	0	15	0	0
11	Zipper Length	3/8		12 1/2	13	13 1/2	14	14 1/2		- 1/2	- 1/2	13 1/2	1/2	1/2
12	Wind flap Length	3/8		12 1/2	13	13 1/2	14	14 1/2		- 1/2	- 1/2	13 1/2	1/2	1/2
13	Wind flap Width	1/8		1	1	1	1	1		0	0	1	0	0
<b>Revision Date</b>														

[illegible]

# Point of Measurement

The image displays two line drawings of a long-sleeved corset, illustrating the locations for 13 different measurements. The top drawing is a front view, and the bottom drawing is a back view. Red lines and numbers indicate the specific measurement points.

**Front View Measurements:**


- 1: Horizontal line across the bust.
- 2: Vertical line from the bust line to the waist.
- 3: Horizontal line across the shoulders.
- 4: Vertical line from the shoulder line to the bust line.
- 5: Diagonal line from the shoulder to the waist.
- 6: Horizontal line across the hips.
- 7: Horizontal line across the bust.
- 8: Horizontal line across the waist.
- 9: Horizontal line across the hips.
- 10: Horizontal line across the bust.
- 11: Vertical line from the bust line to the waist.
- 12: Horizontal line across the bust.
- 13: Horizontal line across the shoulders.


**Back View Measurements:**

- 1: Horizontal line across the bust.
- 2: Vertical line from the bust line to the waist.
- 3: Horizontal line across the shoulders.
- 4: Vertical line from the shoulder line to the bust line.
- 5: Diagonal line from the shoulder to the waist.
- 6: Horizontal line across the hips.
- 7: Horizontal line across the bust.
- 8: Horizontal line across the waist.
- 9: Horizontal line across the hips.
- 10: Horizontal line across the bust.

Decompressed Co													Stitches and Seams
Style #:	2110	#	Stitch Number (ISO 4915 number)	Seam Number (ISO 4916 number)	Seam Allowance in Inches	S.P.I.	Thread Type	Pressure Setting (Seam Tape)	Heat Setting (Seam Tape)	Adhesive Time (Seam Tape)	Tape Width	Tape Thickness	Application location
Style Name:	Compressed	1	6.01.01	EFd	.5"	TBD		N/A	N/A	N/A	N/A	N/A	Serging Shoulder Seam
Description:	Women's Fitted Compression Top	2	1.01	SSa	.5"	TBD		N/A	N/A	N/A	N/A	N/A	Used for the neckband
Category:	Women's	3	N/A	SSab	.5"	N/A	N/A	TBD	TBD	TBD	TBD	TBD	Using seam tape on the inside of the garment to fold down & cover the seam allowance
Size Range:	XS-XL	4	N/A	SSaa	.5"	N/A	N/A	2.8 to 4.2 Bar	120 C to 130 C	20 to 30 Seconds	.5"	N/A	This is how the tape should be attached to the edges of the fabric for the seam
Season:	Autumn/Winter	5	N/A	EFa	.5"	N/A	N/A	2.8 to 4.2 Bar	120 C to 130 C	20 to 30 Seconds	.5"	N/A	Seam tape will be used to hem the garment
Year:	2018	6	N/A	SSa	.5"	N/A	N/A	2.8 to 4.2 Bar	120 C to 130 C	20 to 30 Seconds	.5"	N/A	Used for every seam except the shoulder seams and the neckband
Vendor:	TBD												
Country of Origin:	Bangladesh												



Decompressed Compression Top		1st Proto Comments	
Style #:	2110	Last Updated:	3-May-18
Style Name:	Compressed	Date Created:	3-Apr-18
Description:	Women's Fitted Compression Top		
Category:	Women's		
Size Range:	XS-XL		
Season:	Autumn/Winter		
Year:	2018		
Vendor:	TBD		
Country of Origin:	Bangladesh		
<b>Garment Details</b>			
1	Bottom needs to be hemmed		
2	Sleeve opening needs to be hemmed		
3	Elastic Band Needs to be Added under the bust		
4	Should have a visible magnetic zipper that opens at both ends		
5	Zipppers need to be added at wrist opening		
6			
<b>Fit</b>			
1	Too much ease in the sleeves and armhole/armpits, and shoulders		
2	needs to be more compressed under the bust		
3	needs more compression throughout the entire garment		
4			
5			
6			
<b>How to Proceed</b>			
1	remove ease from armhole, sleevesm and shoulders		
2	add elastic waistband under the bust		
3	Hem bottom of garment		
4	replace invisible zipper with a visible magnetic zipper		
5	add zipper to sleeve openings		
6			
			

Decompressed Compression Top		2nd Proto Comments	
Style #:	2110	Last Updated:	3-May-18
Style Name:	Compressed	Date Created:	3-Apr-18
Description:	Women's Fitted Compression Top		
Category:	Women's		
Size Range:	XS-XL		
Season:	Autumn/Winter		
Year:	2018		
Vendor:	TBD		
Country of Origin:	Bangladesh		
<b>Garment Details</b>			
1	Should be a separating magnetic Zipper		
2	Add neckband		
3	add elastic in the waistband casing		
4	excess of fabric, and bunching at the side seam		
5			
6			
<b>Fit</b>			
1	Remove more ease in the arm hole		
2	remove ease at the shoulder		
3	the waistband needs to move up under the bust- reduce bunching		
4			
5			
6			
<b>How to Proceed</b>			
1	Confirm your understanding on the above changes		
2	Send another sample with the changes		
3	Change the order of operations for connecting the bottom panel to the waistband		
4			
5			
6			
			

Decompressed Compression Top		Final Proto Comments	
Style #:	2110	Last Updated:	3-May-18
Style Name:	Compressed	Date Created:	3-Apr-18
Description:	Women's Fitted Compression Top		
Category:	Women's		
Size Range:	XS-XL		
Season:	Autumn/Winter		
Year:	2018		
Vendor:	TBD		
Country of Origin:	Bangladesh		
Garment Details			
1	Different Fabric from 2nd Sample		
2			
3			
4			
5			
6			
Fit			
1	Bottom portion of the compression garment needs adjusting - not enough stretch with the fabric, thus the garment is too large with the new pattern pieces		
2	remove bunching in the back		
3			
4			
5			
6			
How to Proceed			
1	Confirm understanding of above changes		
2	Change fabric of lower portion of compression garment		
3			
4			
5			
6			
